

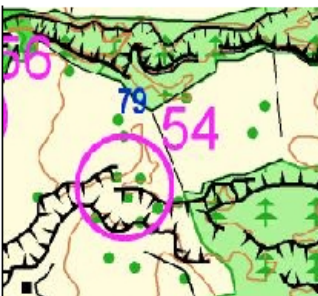
NZ Rogaine Champs 2008

TAUPO 24/25 MAY 2008

Newsletter #2

Entries are now open for the 2008 Rogaine Champs, with the entry form attached to this newsletter. Hosted jointly by Rotorua and Taupo orienteering clubs, Mark Copeland and Lance Eccles are Controller and planner. The full championship event is a 24 hour event, and the 12 hour event has split six hour outings.

THE MAP – The base map is now complete with crisp clear contours after the removal of clutter. Scale will be 1:45000 with several insert areas at 1:10000. The course area is extremely diverse, from open farmland heavily dissected by forested erosion gullies to steep intri-



cate native and pine forest, through to one control at an all night café.



PLANNING – Armchair planning is complete and the fieldwork well advanced. Be warned, do not become lulled into a false sense of security. Multiple route choices and ever-changing terrain will call for vigilance.

EVENT CENTRE – The benefit to you of knowing that Taupo is the base for accommodation and the event centre outweighs any ‘secrecy’. There is excellent camping space at the

event centre with toilets and water provided but no cooking or showers. For more comforts of home try Lake Taupo Top 10, it's walking distance to the events centre with camping and cabins and motel units available.

PHOTOS – For those with an inquisitive mind here are a couple of Photo's of the general terrain/ground cover to get you thinking.



Visit www.cdorienteering.co.nz or
contact ecfam@xtra.co.nz